



MONTHLY MEMBERSHIP PROGRESS REPORT

District 404 A2

Results as of: 5/31/2015

GMT: Amarpreet Sembhi

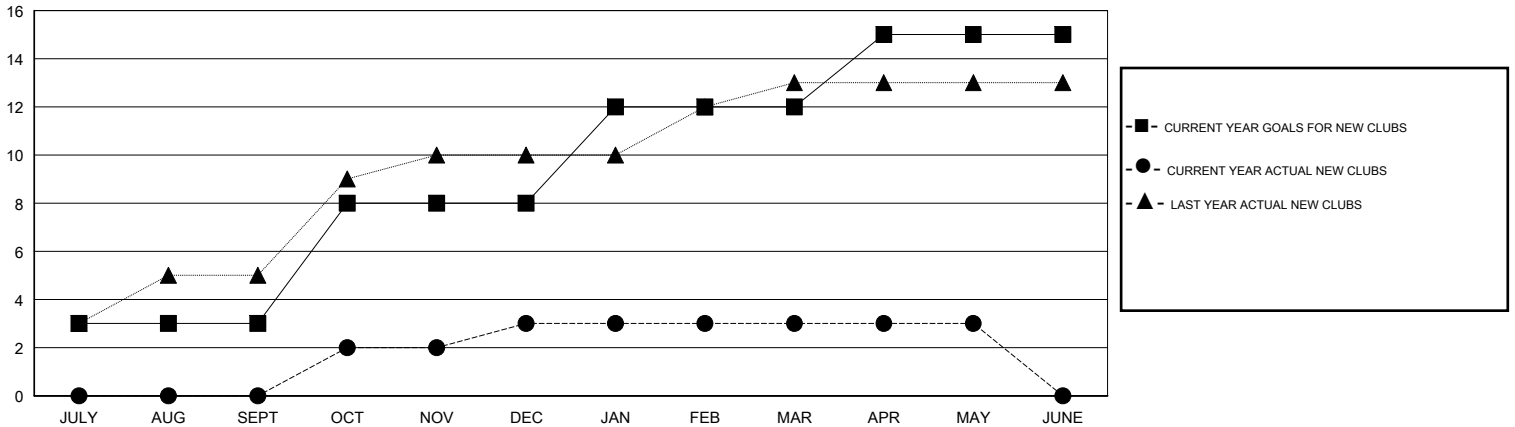
LOCATION NIGERIA

GMT CA 6-Af

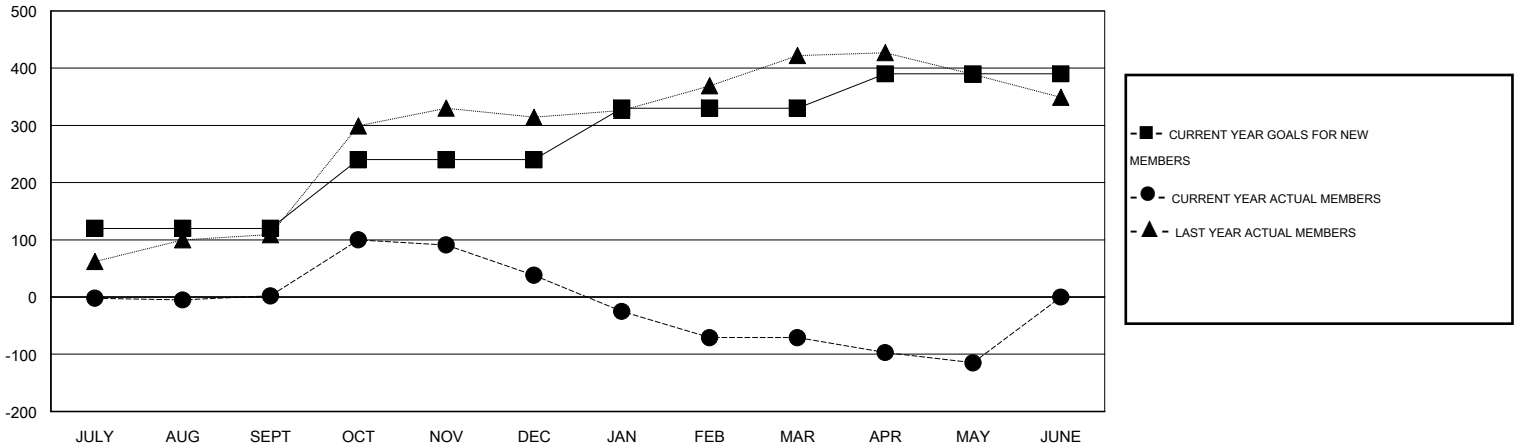
| Clubs | | | | |
|-----------------------|---------------|-----------|---------------|---------------|
| RESULTS FOR 2014-2015 | | | | |
| QUARTER | NEW CLUB GOAL | NEW CLUBS | DROPPED CLUBS | NET GAIN/LOSS |
| JULY/AUG/SEPT | 3 | 0 | 0 | 0 |
| OCT/NOV/DEC | 5 | 3 | 3 | 0 |
| JAN/FEB/MAR | 4 | 0 | 5 | -5 |
| APR/MAY/JUNE | 3 | 0 | 0 | 0 |

| Members | | | | |
|-----------------------|-----------------|-------------------------------|-----------------|---------------|
| RESULTS FOR 2014-2015 | | | | |
| QUARTER | NEW MEMBER GOAL | CHARTER AND NEW MEMBERS ADDED | DROPPED MEMBERS | NET GAIN/LOSS |
| JULY/AUG/SEPT | 120 | 41 | 39 | 2 |
| OCT/NOV/DEC | 120 | 185 | 149 | 36 |
| JAN/FEB/MAR | 90 | 26 | 135 | -109 |
| APR/MAY/JUNE | 60 | 38 | 82 | -44 |

GOALS AND ACTUAL NEW CLUBS CUMULATIVE



GOALS AND ACTUAL MEMBERS CUMULATIVE



| | |
|------------------------|------------|
| DROPPED CLUBS: 8 | |
| <u>DROPPED MEMBERS</u> | |
| DECEASED | 2 |
| CLUB CANCELLED | 192 |
| OTHER | 211 |
| TOTAL | 405 |

43 CLUBS OF 78 ADDED 1 OR MORE NEW MEMBERS

| GENDER DISTRIBUTION | |
|---------------------|----------------|
| MALE | 1,178 (63.99%) |
| FEMALE | 663 (36.01%) |

[CLICK HERE FOR HEALTH ASSESSMENT DATA](#)

| | |
|-----------------------|-----|
| FAMILY UNIT MEMBERS | 103 |
| HEAD OF HOUSEHOLD | 47 |
| NON-HEAD OF HOUSEHOLD | 56 |